

MILFORD LIVE

photo link: Killens Pond State Park

 MilfordLive

 @Milfordlive

SUBSCRIBE 

March 28, 2023
Vol. 13 • Issue 13

Headlines2
Culture.....5
Business9
Government & Politics 13
Education..... 15
Health 19
Sports.....22
Stay Connected25



TAX FREEDOM DAY - APRIL 15

10 CENTS **The Milford Hard Times**

... KNOW WHERE TO GET YOUR GOGGLE JUICE? WE DO! ...

Tired of working for Uncle Sam?

Then come out out and show your moxie by coming to the first annual 1930s Fest! Saturday April 15th from 1:00 to 4:00 PM.

- 30s Era Selfie Backdrops - Meet and Greet FDR
- Tunes by Wooden Nickels - Grub by Coco Mango Island Grille

Fun Tax Day Event



Affordable Home Internet



Winter Sports Winners

HEADLINES



photo link: Marcia Reed

fondue. OPENS IN PENNY SQUARE

BY TERRY ROGERS

The much anticipated fondue., a new restaurant located in Penny Square in downtown Milford opened March 23 to outstanding reviews. The restaurant, the latest venture created by Zack and Marissa King, features fondue-style meals and unique hand-crafted cocktails.

“All in all, I would say it went better than Zack and I could have expected,” Marissa posted on social media. “Starting a new and unique concept was terrifying, for sure. We lucked out with staffing and are so grateful to have the team we do at fondue., not to mention our crew at EasySpeak holding it down while we were at fondue. the majority of the weekend.”

The menu at fondue. includes starters such as the chef’s charcuterie, pupu platter, steamed shrimp, chicken satay and a Cajun seafood boil. Salads include their house and Caesar salad, Cobb salad as well as a South of the Border salad. Any salad can be upgraded with chicken, shrimp or filet mignon. Fondue options are available as a package for two which includes a cheese, entrée and chocolate course accompanied by a salad. Diners can also choose each course separately, all of which are designed for two people. The cocktail menu includes many unique options, including the “On a Cloud,” a fruit-based drink topped with cotton candy as well as the famous EasySpeak smoked old fashioned.

“Marissa and Zack King outdid themselves again with fondue.,” Erin Germick posted. “So much hard work and dedication went into their new restaurant. The aesthetic is gorgeous and the food was absolutely delicious.”

The new restaurant features walls adorned with greenery and historic photos of Milford as well as cutting boards of all shapes and sizes. Many of the boards feature the names of those who have supported the King’s throughout their journey. All tables as well as the bar feature burners where guests can enjoy the wide range of sauces available. Cheese options include classic Swiss, Wisconsin-aged cheddar, bacon, cheddar and ranch, fontina, spinach and artichoke or South of the Border. The cheese course includes dippers like broccoli, carrots, peppers, Granny Smith apples and more.

In addition to the cheese course, the entrée options include classic vegetable, the fondue. signature, steakhouse bone broth, Eastern Shore, Pad Thai or Tikki Masala. Dippers include shrimp, chicken and filet mignon along with mushrooms, fingerling potatoes, broccoli and celery. Upgraded proteins include maple leaf duck breast, fresh-water lobster tail, fresh octopus medallions or Iberico pork tenderloin. The chocolate course offers an option of either milk, dark or white chocolate that can be specialized. Specialty flavors include s’mores, caramel turtle, Reese’s bomb or Spike it Up. The Spike It Up version includes flambeed bourbon or spiced rum. Dippers include Rice Krispie treats, banana, strawberries, pound cake, chocolate chip cookies and brownies.

See fondue. on page 4



fondue. from page 3

“Not sure what I was most impressed with,” Chrissy Utberg Bartz posted. “Delicious cocktails powered by EasySpeak Spirits, the cheddar bacon ranch cheese fondue, a flavorful homemade broth with huge portions of chicken, ahi tuna, filet duck and shrimp or the chocolate with homemade Rice Krispie treats. And the atmosphere and service were exceptional. Don’t wait to make your reservation. Do it now or gather up your friends and head over to hang and enjoy fondue at the amazing bar. You will not be disappointed.”

Marissa thanked all of those who pulled both her and Zack aside to tell them how proud they were and how much they appreciated what the couple is doing for Milford.

“People we have never even met before being appreciative,” Marissa posted. “I am awful at accepting compliments so although I may shrug it off and say something like ‘hehe, we are trying,’ you have no idea how much it means to us. To see the long long days, time away from our families, time away from our daughter, being recognized and appreciated so much. To our family at EasySpeak, we love y’all and that’s just what each of you are to us—family. We spend more time with you guys than we do with our friends or families. To our patrons, we literally couldn’t do it without each of you.”

fondue. is located at 39 N. Walnut Street in downtown Milford and is open Thursday through Sunday starting at 4 p.m. Reservations can be made by visiting www.eatatfondue.com. The restaurant is also hiring bartenders, servers and kitchen staff. Anyone interested should apply on their website.



Mon-Fri 7am-5pm
Sat 7am-Noon
302-422-8066
info@milfordsouthernstates.com



Paw-don me.
We don't mean to inter-ruff you, or hound you,
but.....

Paws for dramatic effect.

Introducing our NEW LINE OF DOG FOOD
It's True!

\$5.00 off through April 30th 2023

AVAILABLE
03/28/2023



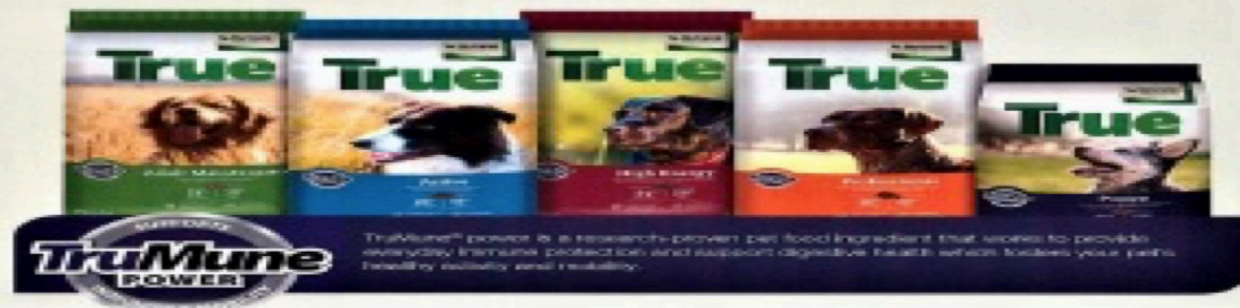
Trust is in Nutrena[®]

Based at Nutrena we believe in creating superior quality nutrition. Our customers can trust that we use only the best ingredients and over 100 years of animal nutrition research to every product. Great food is the #1 reason pet owners choose the food they eat, and with Nutrena, they know their pet's health is their best course.

Hardworking, high-quality nutrition

Nutrena now offers a specialized pet portfolio to make it easy to give all your customers what they want. That's why we created Nutrena True... to better meet the needs of pet owners and the active dogs they love. True... made for dog enthusiasts looking for premium nutritional value they can't find anywhere else.

From the family dog to the active dog,
we've got you covered.



Big round of ap-paws, please.



Anniversary

CULTURE



Photo link: Marcia Reed

TAX FREEDOM DAY - APRIL 15

10 CENTS

The Milford Hard Times

.. KNOW WHERE TO GET YOUR GIGGLE JUICE? WE DO !! ..



Tired of working for Uncle Sam?

Then come out out and show your moxie by coming to the first annual 1930s Fest ! Saturday April 15th from 1:00 to 4:00 PM.

- 30s Era Selfie Backdrops
- Meet and Greet FDR
- Tunes by Wooden Nickels
- Grub by Coco Mango Island Grille

Tunes by the Wooden Nickels

Grub By Coco Mango Island Grille



No Mickey Finns here !! Ya Follow? Drink Local, Drink Mispillion

Brought to you by the Milford Museum and Mispillion River Brewing .. Savvy?

MISPILLION BREWING AND MUSEUM PARTNER FOR TAX DAY EVENT

BY TERRY ROGERS

Mispillion Brewing Company and the Milford Museum have partnered for an event to be held on April 15 from 1 to 4 p.m. at the brewery. The event, Tax Freedom Day, will have a 1930s theme and is designed to promote membership in the Milford Museum.

“We are excited to partner with the museum for this fun, unique event,” Kevin DiCostanzo, events and concessions manager, said. “We all know how stressful tax day can be, so we thought this would be a great way to get people out to enjoy a cold craft beer, enjoy some live music and support the museum at the same time.

The event will feature music by Wooden Nickels and food by Coco Mango Island Grille. There will be 30s era selfie stations and attendees can even meet President Franklin Roosevelt who will be in attendance. Not only will museum volunteers be available to talk about their many membership options, some will be portraying famous Depression-era characters.

“We are always looking for different ideas to promote the museum,” Denise Curtis, chair of the museum Membership Committee, said. “Although we usually do events like this as fundraisers, we thought this would be

See TAX on page 7

Proud partners in our Delaware communities

mountaire.com



“ Our ads change at the pace of our business needs

- SOUTHERN STATES

a different change of pace. We are looking for members and we offer a wide range of membership options, so we would love to take the opportunity to chat with people and let them know how they can support our mission.”

Individual memberships receive 10 percent off all gift shop items, invitations to exclusive members-only events, subscription to the museum e-newsletter and early access to tickets for select events. Family memberships receive the same benefits as individuals but for up to two adults and four children.

“We are especially excited about our Reciprocal membership,” Curtis said. “Not only do those who sign up for a reciprocal membership get the same benefits as individual and family members, they also become members of the North American Reciprocal Museum Program, or NARM, which offers discounts to attractions around the world. We also have contributor, patron and corporate sponsorship levels as well and we are thrilled to be able to explain all of them in person.”

For more information about the event, contact the museum at 302-424-1080.



Give your Fur Baby the BEST VACATION of the Year.

FUR BABY PET RESORT IN MILFORD, DE

SHERRY SHUPE
Fur Baby Pet Resort Owner,
Dog lover

FUR BABY
PET RESORT

the meoli companies

**BA-DA-BA-BA-BA
BIG OPPORTUNITY.**

JOIN OUR TEAM

CAREER FAIRS
HAPPENING SOON NEAR YOU

LEARN MORE



CULINARY SCHOOL STUDENTS LEARN TO MAKE SWEET TREATS FROM EXPERT

STAFF REPORT

Students at the Food Bank of Delaware Culinary School learned to make donuts from scratch at the hands of champion pastry chef Dru Tevis recently. Tevis, corporate pastry chef at SoDel Concepts, demonstrated how to create taste-tempting treats while answering questions from students. In addition, Tevis provided students with opportunities to handle the dough, fry the donuts and finish them with a variety of frostings before sampling.

Tevis, a Delaware coastal-area resident, took home the \$25,000 grand prize from the 2022 Food Network's Holiday Baking Championship. He also shared his experiences from that competition with the students.

The Food Bank of Delaware's Culinary Schools, one in Milford and one in Newark, offer a 14-week daytime culinary training program. Student tuition and supplies are paid through grants and generous donations. The training includes 12 weeks of on-site classroom and kitchen instruction, including the opportunity to complete ServSafe certification. The final two weeks are dedicated to a two-week paid internship, usually leading to employment in the culinary industry.

Students in this class will graduate in April. The next class starts May 15 in Newark and Sept. 11 in Milford. A new 12-week training program for adults with disabilities will be introduced at the Milford facility starting



on April 10. For young adults interested in learning more about the culinary field, a four-week introductory Summer Culinary Exploration Program will be offered to teens and young adults with disabilities starting in July at the Milford facility.

To learn about the Food Bank of Delaware's culinary training opportunities at the Milford branch, visit www.fbd.org/delawarefoodworks or contact Michelle Cephas at mcephas@fbd.org or 302-424-3301, extension 107.

MILFORD
LIVE

BUSINESS



Photo link: Marcia Reed



BY TERRY ROGERS

Anyone who has ever needed to use a dumpster knows how large they can be and, if you live in an area where outdoor space is limited, it can be difficult to find a location that will allow for something that size. Red-E-Bins hopes to address this problem with bins that start at five-cubic yards.

“My brother and I decided to start this company,” Jon LoBiondo, an owner of the new company, said. “After searching multiple business opportunities, we thought this business had great potential. Red-E-Bins is a new take on the tried and true dumpster business. We have a unique delivery system for smaller dumpster bins in five-, 10- and 15-cubic yard sizes. Our bins are perfect for small or tight spaces such as in-town driveways or small parking spaces. The trailer system delivers the bin flat on the ground without causing any damage to yards, curbing or driveways.”

RED-E-BINS OFFERS UNIQUE SPIN ON DUMPSTER OPTIONS

LoBiondo and his brother, who also have two partners in the business, are Delaware natives, growing up in Lewes. LoBiondo graduated from Cape Henlopen High School and holds a master’s degree in curriculum and instruction, as well as a certificate in administrative leadership. He has been with Milford School District for 25 years, holding positions as coach, teacher and assistant principal. He currently serves as the supervisor of transportation. He is married and has three children.

“Our bins are perfect for kitchen, bath or flooring renovations,” LoBiondo said. “They are also great for cleaning out your attic, basement or garage. We can provide a bin that meets any customer’s need.”

The brothers decided to start this business as they knew people in the industry. He explained they also realized there was a developing trend in the service industry with the growth in Delaware which provides opportunities in this market. LoBiondo believes having exclusive access to this type of new delivery system will set Red-E-Bins apart from other dumpster companies.

“The bulk of our business transactions will be conducted online,” LoBiondo said. “We are currently working with a website company to allow the customer to complete forms, check availability of bins through a digital calendar, order a bin and pay for it online. The

See BIN on page 10

GBC 1886 **Goldey-Beacom COLLEGE**

NEW GRADUATE CERTIFICATE PROGRAMS

- Certificate in Marketing
- Certificate in Human Resource Management
- Certificate in Health Care Management
- Certificate in Entrepreneurship
- Certificate in Information Technology

LOCATION | **CONTACT** | **WEBSITE**

4701 Limestone Road
Wilmington, DE 19808

302-225-6248
Admissions@gbc.edu

www.gbc.edu/

bins are currently stored in Milford and will service both Kent and Sussex counties. We will initially be offering seven-day rentals for each size of bin.”

The actual days of operation will be Tuesdays and Thursdays, but LoBiondo explained that individual needs may be managed upon request. The biggest challenge to the company, according to LoBiondo, is that there are large companies that currently serve the entire Eastern Shore which means Red-E-Bins will be going head-to-head with them. This will require a significant amount of attention to detail, excellent service and ongoing customer support.

“I am looking forward to the challenge of growing and developing our brand of dumpster business,” LoBiondo said. “It’s a unique, local model and will serve the community’s needs as well. We have innovative ideas about how to create awareness and connect with local communities in a way that we just don’t see other companies doing currently.”

LoBiondo explained that Red-e-Bins is working on a hiring plan in order to bring on qualified drivers who will help them scale up the business in the near future.



PACE Is The Place For Me! Hear what PACE Your LIFE participants are saying!



"Since I have enrolled, I have become more lively and social. I like everything about PACE, especially the people and the food!" ~ Theresa Shaffer

"Before enrolling in PACE Your LIFE I was depressed. Now I love to mingle with the participants and help them enjoy themselves." ~ Ed Darling

"My days before PACE Your LIFE were terrible. I was home alone all day. Now I tell people there is nothing else like PACE." ~ Ronnie Armstrong



PACE Your LIFE is a comprehensive medical and social program for residents in Milford as well as surrounding towns, who are 55 and older and need assistance with activities of daily living but want to age in place and remain in their home. Learn more today by scanning the QR Code! →



Your Life, Your Home,
Your Way



A Program of All-Inclusive Care
for the Elderly



KSI RECEIVES GENEROUS GRANT FROM HELEN D. GROOME BEATTY TRUST

STAFF REPORT

KSI announced that it has received a generous \$20,000 grant from the Helen D. Groome Beatty Trust to support its Pre-Vocational Training Program. This donation will enable KSI to grow its technological resources with smart boards and laptops.

KSI is a not-for-profit agency providing transportation, vocational training, employment, community integration, day habilitation, life enrichment and nutritional services to individuals with disabilities throughout Kent and Sussex counties.

The Helen D. Groome Beatty Trust is a non-profit foundation based in Pittsburgh, PA. The foundation,

which was founded in 1951, focuses on supporting the arts, education and human services. The trust is administered by BNY Mellon Wealth Management.

KSI is committed to making all reasonable accommodations in order to ensure that all programs and services are as accessible as possible to as many people as possible. To learn more, visit KSI's web page at www.ksiinc.org or contact Alicia Hollis, director of community relations, at hollisa@ksiinc.org, or (302) 422-4014 ext. 3015. Like us on www.facebook.com/KSIWorks.



FEEL BETTER SOONER.

WITH BAYHEALTH VIRTUAL URGENT CARE, YOU CAN SEE A BOARD-CERTIFIED DOCTOR IN AS FEW AS 10 MINUTES, 24/7.

Allergies, rashes, infections, sore throat, cold and flu, gout, UTIs. Whatever the symptoms, get the care you need sooner. Download the app and enroll today. Bayhealth.org/Virtual-Urgent-Care

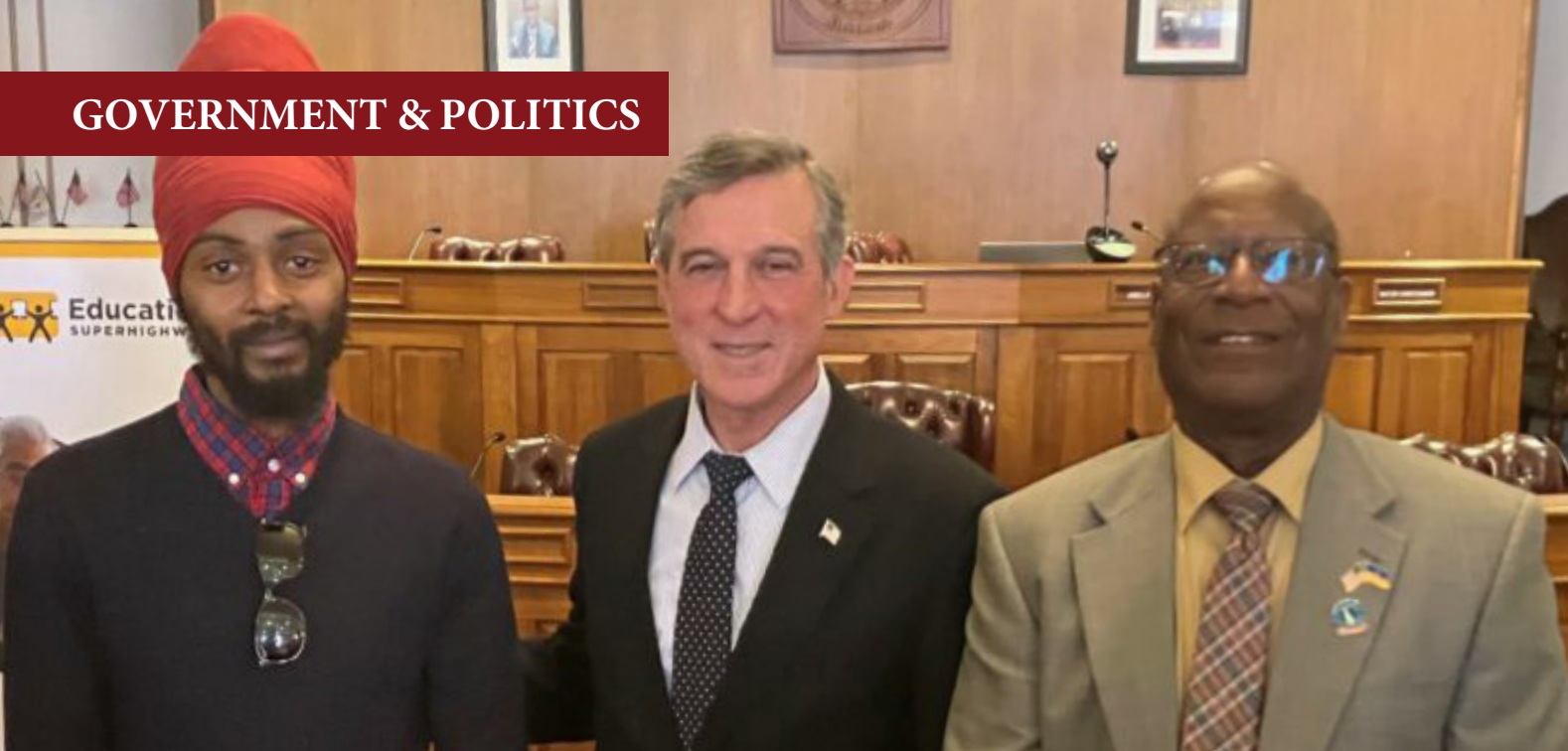
BAYHEALTH@HOME



GOVERNMENT & POLITICS



photo link: [Scott Evers](#)



STAFF REPORT

Mayor Archie Campbell, in partnership with Gov. John Carney, has announced a new initiative to close the digital divide in Delaware. The new initiative aims to build awareness about the \$14 billion **Affordable Connectivity Program** (ACP), a long-term federal benefit that will help to lower the cost of broadband service and help low-income families to afford home internet service.

The ACP is a federal benefit that aims to connect these individuals by providing eligible households with a discount of \$30/month toward their home internet bill or \$75/month for households on Tribal lands. In addition, the benefit provides a one-time \$100 discount toward a connected device through a participating provider. At this time, only 26 percent of eligible households have applied for the benefit due to a lack of awareness, lack of trust in the program, or inability to enroll due to application barriers.

“High-speed home internet allows Americans to work remotely, send their children to school, access healthcare, job training and critical government services,” said Mayor Campbell. “We are committed to closing the broadband affordability gap in Milford so that every resident has equal access to the opportunities of the digital age.”

A key component of the plan will be the creation of a unique public-private partnership that will work to close the broadband affordability gap. A recent report from the national nonprofit, EducationSuperHighway, highlighted that approximately 28

AFFORDABLE HOME INTERNET COMES TO MILFORD

million of the 123 million households in the United States do not have high speed broadband. Eighteen million of these households, home to 47 million people, are offline because they cannot afford an available internet connection.

This broadband affordability gap is concentrated in Milford’s underserved communities and disproportionately impacts people of color. Previous efforts to provide the resources households need to connect have fallen short.

“Denham [Dodd, the city’s technical support specialist] was instrumental in getting the ACP program to market to the Haitian community by printing literature in Creole,” said Mayor Campbell.

The new initiative will focus on ensuring Milford’s residents are aware they might be eligible for the benefit and engaging trusted community partners to support outreach. A household is eligible if one member of the household meets at least one of the criteria below:

- Has an income that is at or below 200% of the **Federal Poverty Guidelines**;
- Participates in certain assistance programs, such as SNAP, Medicaid, Federal Public Housing Assistance, SSI, WIC or **Lifeline**;
- Is approved to receive benefits under the free and reduced-price school lunch program or the school breakfast program, including through the USDA Community Eligibility Provision;
- Received a Federal Pell Grant during the current award year;
- Meets the eligibility criteria for a participating broadband provider’s existing low-income program; or
- Participates in one of several tribal-specific programs, such as Bureau of Indian Affairs General Assistance, Tribal Head Start (only households meeting the relevant income qualifying standard), Tribal TANF or Food Distribution Program on Indian reservations.

To get started, households can visit [GetACP.org](https://www.getacp.org), EducationSuperHighway’s pre-enrollment tool to see if they qualify, what documents they will need at the time of application, and to see a list of “free with ACP” home internet plans.

EDUCATION



Photo link: [Milford School District](#)



CITY AND MSD PARTNER TO CREATE WALKING PATH

BY TERRY ROGERS

The city of Milford and Milford School District have partnered to design a shared use pathway near Milford High School. The new path is planned to run along the parking lot of Briggs Stadium, cross over Northeast Tenth Street and travel along Silicato Parkway.

“Mr. Sharp has really done a great job with this,” Dr. Kevin Dickerson, superintendent, said. “We have two renderings, and we are going to meet with DelDOT about the plans, but it is a shared pathway that will connect to a greater pathway throughout the city. We think it is advantageous throughout the entire community as well as the school district. It will be a safe place.”

In addition to the shared use path, DelDOT’s plans include egress to and from the stadium, something the district has needed for some time.

“If you’ve been here for large events, especially in the stadium parking lot, you know we need this egress,” Dickerson said. “We will now have a pathway out or an

exit that also connects Silicato Parkway that kind of comes up almost behind the lower turf field.”

Mike Sharp, supervisor of buildings and grounds, explained that the main purpose of the new shared use pathway was for safety. The added exit would also be beneficial after football games and graduation. Dickerson stated that as the Silicato Parkway area grows, adding a shared use path would create a safer place for students and other pedestrians.

The two plans are almost identical as School Board President Jason Miller pointed out. One showed a small rise on the east end of the stadium parking lot.

“That’s the only difference I saw,” Sharp said. “We’re going to meet with DelDOT in a couple of weeks. The individual will be back from maternity leave and we’re going to meet the first or second week of April just to walk the area to make sure we’re all on the same page. But the only difference from the original I saw was

The Delaware Breast Cancer Coalition Presents...
 The 25th Annual Breast Cancer Update

**Access & Advances
 in Breast Cancer**

April 19, 2023 8:00 a.m. - 1:00 p.m. Zoom

db DELAWARE BREAST CANCER COALITION

DELAWARE HEALTH AND SOCIAL SERVICES
 Division of Public Health
 Comprehensive Cancer Control Program

LEARN MORE

dumping right into the parking lot. So, this is a really big change from where it was six months ago.”

Miller asked if the new path would impact any existing infrastructure such as fencing or impervious surfaces. Sharp stated that one part of the fence may need to be removed, but that more details on that would be learned when he met with DelDOT and the city in the next few weeks. There was no timeline for when the new path would be installed.



MSD ADOPTS USE OF FORCE POLICY

BY TERRY ROGERS

At a recent meeting, Milford School District Board of Education adopted a Use of Force policy. The policy allows constables placed in the school the authority to use deadly force to the extent permitted by Delaware statues. Based on the policy, deadly force may only be used when a constable believes “to the greatest extent afforded deference by Title 11, given the circumstances known to the constable at the time in order protect students, school employees or visitors of the Milford School District from apparent death, serious physical injury, kidnapping or sexual intercourse compelled by force or threat.”

“In essence, the strategic decision that we made was to actually reference the statute in the law in our policy,” Dr. Adam Brownstein, a member of the school board who worked with the district on the new policy, said. “And frankly, if anything changes in that statute, we would still be compliant by back referencing the clause in question from a public transparency standpoint. The purpose of this was that with that passing of Senate Bill 147, the use of deadly force, would be reasonable if deemed reasonable by a ‘reasonable person.’ And the concern that we had was that a constable often has a level of training that is different from what a reasonable person would be and therefore might affect their actions differently.”

Brownstein, who initially did not support the policy,

felt that the new language made it clear that the district was abiding by the letter of the law. The new policy forbids constables from using deadly force when an alternative would avert or eliminate imminent danger. Deadly force is also not permitted when the actions are only destructive to school property. Constables are not permitted to use a weapon to signal for help or fire a warning shot. They may also not pursue an individual who has left school grounds.

In addition, the policy only allows a constable to unholster a weapon for maintenance, to secure the firearm in an appropriate area, during training, practice or qualification, or when circumstances create a reasonable belief that it may be necessary to use the firearm for protection.

“And I would like to say historically, in the last two meetings, I’ve not supported this policy, but I am now prepared to throw my support behind the policy as stated,” Brownstein said. “So, thank you, to all those involved.”

School Board President Jason Miller commented that he hoped the district never had to use the policy.

“If we ever do find ourselves in a situation as a district where this policy is applicable, we will be glad to be in compliance with the code and the law,” board member Matt Bucher said.

The policy passed unanimously.



Do your dollars make sense?

All DE schools are funded through a strict formula no matter the needs of the students.

The "one-size-fits-all" approach has not worked, right?

If we want DE to get smart like our neighbors...

Join the conversation.

Click to subscribe to our newsletter.

FIRST STATE EDUCATE

EXPECT EXCELLENCE · ACT TOGETHER

FAMILIES NEED YOUR SUPPORT

Ask Congress to protect parents' option to choose the public school that best fits their kids' needs!
<https://act.publiccharters.org/delaware>

JOHN MOLLURA

- PHOTOGRAPHY -

BEAUTY PORTRAITS - HEAD SHOTS
- FAMILIES -

302.222.6308



HEALTH



Photo link: [Bayhealth Medical Center](#)

MILFORD WELLNESS VILLAGE OFFERS WE CARE PROGRAM

BY TERRY ROGERS

Milford Wellness Village recently announced the launch of a new website for their WeCare program. It is a personal health nursing program and the website is designed to promote wellness as well as improve access to Chronic Disease Self Management in collaboration with the Delaware Department of Health.

“Our program is designed to equip participants with a comprehensive set of skills and techniques to manage chronic diseases and improve their overall well-being,” Lon Keiffer, executive director of Milford Wellness Village, said. “We offer virtual classes and can provide laptops, Wi-Fi connection and technical support.”

The WeCare program helps people navigate through their medical needs. They offer assistance with nutrition and daily living activities with the goal of improving lives. The program is funded by the Administration for

Community Living (ACL) which allows the program to be offered at no cost. Seniors can remain safe and healthy in their homes using self-management programs while also getting the tools designed to help them make better healthcare decisions. The programs also offer some socialization for those who may live alone, helping them develop personalized relationships.

“I’m glad to be part of this, I call it family, of health-care members,” Kemi Sanni, care coordinator at WeCare, said. “Because when a patient comes here, like when they go to LaRed, they can stay in one place to do all of their shopping, everything is accessible to them. So, if they want to do their labs, if they want to enroll in WeCare, LaRed just has to call us, so everything is just like centralized.”

See **WELLNESS** on page 21

Why? Choose?

Del-One Federal Credit Union

Helping members reach their goals since 1960



www.Del-One.org | (302) 739-4496




The new website describes some of the programs offered by WeCare, including techniques to handle common challenges like fatigue, poor sleep and feelings of isolation. Fitness is another topic covered by WeCare, with experts providing exercises designed to improve strength, flexibility and endurance. There is also information provided on the proper use of medications and how to effectively communicate with family and friends. Communication tips are also provided for discussions with healthcare providers. Nutrition, techniques to pace activities and evaluation of new treatments are also included.

“Another thing we teach is self-care,” Keiffer said. “People need self-care when they are caring for others. We will teach you how to prioritize your own needs and well-being while caring for a loved one with a chronic illness.”

The new website can be accessed at <https://wecare-services.org>. Clicking on Programs at the top of the home page, it is possible to access either the self-service registration section or a WeCare Assisted Registration for those who may need help registering for the programs. For more information, contact them via email at info@wecareservices.com or call 302-459-3900.



IF YOU REMEMBER MAKING ONE OF THESE,




IT'S TIME TO MAKE ONE OF THESE: Today


LET'S MAKE COLORECTAL CANCER HISTORY *Colonoscopy* **2023**

Help us make colorectal cancer history by scheduling your colonoscopy today or by encouraging your 45+ friends and family to do so.


GET A TOTALLY AWESOME '80S T-SHIRT TO SUPPORT THE CAUSE



▶ LEARN MORE



Delaware Electric Cooperative is Community-Owned, Community-Focused!



We Are Committed to Keeping the Lights On for Our Members!

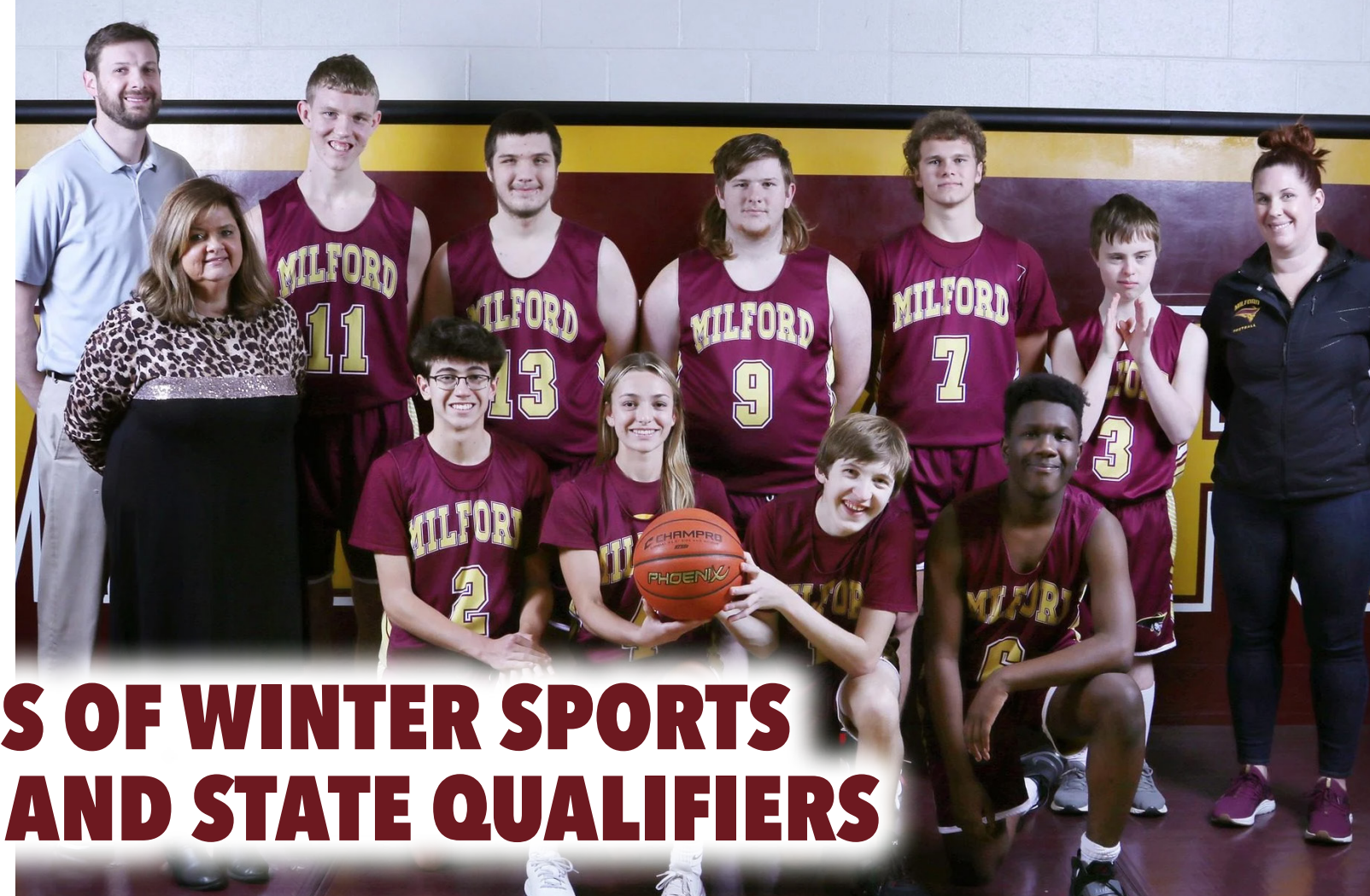
SPORTS



photo by Dave McCallum



MSD RELEASES NAMES OF WINTER SPORTS ALL-CONFERENCE TEAM AND STATE QUALIFIERS



BY TERRY ROGERS

Although spring sports have already begun, Milford School District recently recognized students who have been designated All-Conference Team and State qualifiers. The students were as follows:

Unified Basketball: Nathan Waydelis, First Team Henlopen All-Conference

Boys' Basketball: Ethan Wilkins, Second Team Henlopen Northern Division and Jayden Norman, Honorable Mention Henlopen Northern Division

Girls' Basketball: Tatiyanna Davis, Honorable Mention Henlopen Northern Division

Indoor Track and Field: Benjamin Gusciora, High Jump—First Team Henlopen All-Conference; David

Fuhrman, Shot Put, Second Team Henlopen All-Conference; Kaitlyn Sivels, Shot Put, Second Team Henlopen All-Conference

Swimming and Diving: Carley Mackert, Second Team Henlopen All-Conference; Eryn O'Brien, Honorable Mention, Henlopen All-Conference. **State Qualifiers—Girls:** Giorgia Bertozzi, Carley Mackert, Sophia Massotti, Eryn O'Brien, Eve Sekscinski; **Boys:** Liam Dennehy, Mitchell Graham, Paul Huot, Levi Massotti, Owen Peel.

Wrestling: Vincent Jenkins, Second Team Henlopen All-Conference. **State Qualifiers:** Alexander Sharkey (113), Vincent Jenkins (120). **Individual State Champi-**

onships: Patrick Sharkey (126), Jordan Curry (190). **State Championships:** Greg Lockett (215) and Josue Villarreal-Gomez (285).

In addition, Vincent Jenkins was the fourth place finisher in wrestling at DIAA, while Jordan Curry was the seventh place finisher.

MILFORD
LIVE

SEE MORE PHOTOS ON PAGE 24



STAY CONNECTED

MILFORD LIVE IS YOUR SOURCE FOR NEWS AND INFORMATION IN THE GREATER MILFORD, DELAWARE AREA. STAY CONNECTED WITH US BY PHONE, EMAIL OR ON SOCIAL MEDIA BY CLICKING ON THE LINKS.



PHONE: 302-542-9231



**For News & Information: news@delawarelive.com
To Advertise With Us: shupe@delawarelive.com**



[instagram.com/milford_live/](https://www.instagram.com/milford_live/)



twitter.com/live_delaware



[facebook.com/delawarelivenews/](https://www.facebook.com/delawarelivenews/)





Watch Delaware Live on YouTube!



[linkedin.com/company/delaware-live-news](https://www.linkedin.com/company/delaware-live-news)

MILFORD LIVE

 **MilfordLive**  **@Milfordlive**

**Without these collaborators,
this outlet would not be
possible:**

Bryan Shupe, CEO

Betsy Price, Editor

Sonja M. Frey, Publisher

John Mollura Photography

Design your 2023 through Intentional Business and Marketing Planning

As a locally-owned company, Delaware LIVE News takes pride in working alongside regional businesses to develop digital marketing campaigns, through our daily news platforms.

From large corporations like Christiana Care, Delaware Tech Community College, and Delaware Department of Health to small shops like Fur Baby Pet Resort, Dolce Coffee Shop, and Benvenuto Tuscan Restaurant, we customize each plan to optimize the needs of each of our marketing partners.

I would love the opportunity to meet with you for 10-15 minutes to see how we can help. You can click the link to set up a meeting with me in our virtual office: <https://meetings.hubspot.com/shupe1>

CEO, Bryan Shupe / 302-542-9231 / shupe@delawarelive.com

