

# MILFORD LIVE

photo link: Milford Police Department

 MilfordLive

 @Milfordlive

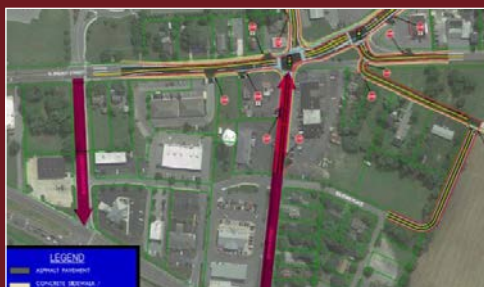
**SUBSCRIBE**

**July 18, 2023**  
**Vol. 13 • Issue 29**

- Headlines .....2
- Culture.....6
- Business ..... 10
- Government & Politics ..... 13
- Education.....20
- Health .....23
- Sports.....25
- Police & Fire.....27
- Stay Connected .....29



State Fair Opens Thursday



Potential 10th Street Intersection Changes



Pickleball Courts Nearing Completion

# HEADLINES



photo link: [Abbott's Mill Nature Center](#)

MILFORDLIVE



MilfordLive



@Milfordlive

MilfordLive.com



# MILFORD FOOD BANK CELEBRATES FIRST CULINARY GRADUATING CLASS

BY TERRY ROGERS

The Milford campus of the Food Bank of Delaware celebrated its first graduating class for its culinary arts school. Eight students who have been learning about the culinary world while also undergoing training for food safety received their ServSafe Certifications as well as a Certificate of Completion at the ceremony.

“We’re so proud of everything they have done and want to thank you, all the family and friends who supported and encouraged them over the last few months and are here to celebrate their success today,” Anna McDermott, chief impact officer, said. “These students would not be here today without everything that you do, so thank you to everyone who supports our

training programs through donations of time and resources and makes it possible for us to offer these opportunities. Today would not be possible without our dedicated workforce development team. These folks are so passionate about making sure that they can do everything they can to support these students.”

Cathy Kanefsky, president and CEO of the Food Bank of Delaware applauded the students as well as the many people in the room who were there to celebrate their accomplishments.

“You have shown another level of grit and determination and possibility that we are so proud. It’s been

see page 4

**CAREER FAIRS**  
 HAPPENING SOON NEAR YOU

[LEARN MORE](#)

**BA-DA-BA-BA-BA**  
**BIG OPPORTUNITY.**

**JOIN OUR TEAM**

amazing to watch all the students grow, learn so much. They actually have had some opportunities that have been unique,” Kanefsky said. “They served lunch at our legislative luncheon at Legislative Hall in Dover. They’ve been able to serve buffets here. How many of you have been able to come to the buffets? Yeah, I was on my way down and I was told to turn around and go home because I didn’t get here in time and the food was gone. I did make it to a couple, and they were fantastic. Just fantastic. And it’s just a great way for us to show the world what we can do. And the world you’re entering is ready. The world is ready for us to be open across the street and have a cafe that you’re going to be able to come to and some of you might be working there with us. And wherever you land, you are sharing and spreading the world of possibility that’s made possible by you as the first class to graduate here in Milford.”

This was the third culinary class to graduate from the Food Bank of Delaware, but Kanefsky stated that she expected it to be the third of hundreds. Kanefsky also explained that she was the mother of twin sons who were autistic, so she understood that it truly took a village to achieve goals.

“Wow, this is absolutely amazing. Just take a look around and see how many people are here. I’m bringing these [tissues] just in case, because when it comes to these students, I’m passionate about what they do and where they’re headed,” John Snarsky, Milford Branch operations director, who delivered the keynote speech, said. “Everybody worked really hard to get to this point. And I’m very proud of all of you. I have to say that you

are the best part of my day, every day. You guys came into the building every morning and say good morning. Every morning, you came in with the right attitude. You came in with absolutely the heart to achieve your goals. You’ll find out that a lot of people will tell you that you can’t do things, but you’ve got to show them that you can.”

Snarsky pointed out that he had led large teams in his career, but had not seen a team that was so willing to learn as the class graduating from Milford’s campus.

“I am so excited you all passed your certification. So excited that the workforce snagged you up so quickly. But I’ll tell you what, you’re part of the Food Bank family forever. Forever. You will always be welcome,” Snarsky said. “And we are so excited to watch and grow. We’re so excited to see you move on in your life and you better come back and say good morning. I am going to keep this short and sweet. One of my sayings, I’ve always said when you’re through learning, you’re through. So don’t ever be through learning. Always continue to learn in your job in life. You’re absolutely amazing. Thank you for letting me be part of your life.”

Tim Hunter, the executive chef at the Food Bank of Delaware, explained that the program began about seven years ago as a summer program, but had grown significantly.

“I always said it was my favorite class, because with these guys’ attitude is everything right? There has never come a day that they are not always happy. You know they were always willing to learn. And you’ve really got to be on your toes. And you really got to be ready for

**BEST SHOT**

**RANGEDAY**

ARMED & EDUCATED

**INDOOR RANGE**

**FIREARM TRAINING**

- Concealed Carry
- Handguns for Beginners
- AR Fundamentals
- Defensive Shooting
- First Aid & Treatments

**PERSONAL SAFETY**

- Self-Defense Seminar
- Personal Safety Event
- Children's Firearm Safety Workshop
- Women's Only Courses

**Open to the Public**

**Memberships Available**

- 15yd Handgun Bay
- 25yd Rifle Bay

302-567-2530 | More Information  
www.bestshotde.com

16797 Coastal Hwy, Lewes, DE 19958

see page 5

from page 4

this class. I saw it happen. You know the word that comes to mind really is opportunity. Just really that's all and all these guys to all they needed was opportunity. Can they work? Absolutely. You know, can they follow through? Absolutely. I've seen it. So I'm proud of these guys. And congratulations to you guys."

As each graduate was presented with their certificates and received a pin on their new white chef jacket, they were given an opportunity to speak to the audience.

"I really want to thank the Food Bank for giving me an opportunity to be able to get a job," David Giblin said. "I wasn't sure I would ever be able to get a job again. I want to thank my bosses who are over there for being here to watch me graduate."

Lashaunda Lynch, who is deaf, spoke to the crowd through her sign language interpreter.

"Thank you for coming. My family and my friends, thank you for coming to see me graduate today. I want to say thanks to everybody who supported me during my journey," Lynch said. "In my life, I never expected this. So I want to thank you all and I hope you have a wonderful day and God bless."

Kayla Strohmeyer told everyone that she was so proud of her accomplishments and reminded her fellow graduates that this was the start of a new life for all of them.

[CLICK TO READ MORE](#)

# AQUACARE

## Physical Therapy

Celebrating **25** Years

[f AquacarePT](#) [@AquacarePT](#) [@AquacarePhysicalTherapy](#)

[www.AQUACAREPHYSICALTHERAPY.com](http://www.AQUACAREPHYSICALTHERAPY.com)

**IN YOUR NEIGHBORHOOD!**

Let us get you moving again at Aquacare - Milford.

We offer gym-based physical therapy at the Milford Wellness Village and aquatic therapy at the Boys and Girls Club pool.

We also offer a medically supervised gym membership!



Learn more and schedule your **FREE 30-minute consultation** today:

Call us at **302-491-4196** or visit us online at [www.aquacarephysicaltherapy.com](http://www.aquacarephysicaltherapy.com)

# CULTURE



photo link: [Second Street Players](#)



# DELAWARE STATE FAIR TO OPEN ON THURSDAY

BY TERRY ROGERS

A tradition that has existed for more than 100 years continues starting Thursday, July 20, when the Delaware State Fair opens in Harrington. Gates open at noon on Thursday but at 9 a.m. for the remainder of the fair. Carnival rides open at 5 p.m. on July 20 and at 1 p.m. all other days.

“My baby girl is showing her pig and heifer through Milford FFA,” Laurie Judd said. “I took off so I could be at all of her shows.”

Debby Dufendach enjoys visiting the animals when she goes to the fair while Kate David enjoyed another type of “wildlife.” “The observation box of bees,” David said. “The children love to pick out the queen.”

Many people look forward to the exhibits and competitions at the state fair. Some of the competitions include culinary, fruit, flower decoration, garden vegetables, needlework and more. Vinnie DiNatile who opened his

own baking business after taking baking classes during the pandemic has entered several items in the competition. In 2022, his Death by Chocolate Oreo cake won the Grand Prize while his fluffernutter brownies earned a second place ribbon and his sweet potato cupcakes third place. He also received the Judge’s Award for Most Outstanding in the cakes and cheesecakes category.

“Vinnie is entering 32 exhibits and seven contests,” his mother, Lori Morgan, said. “He’s looking forward to winning.”

Some look forward to the unique events that are planned at the fair.

“I am hoping Tiffany Shipe wins the Pig Kissing Contest because she is so excited to be a contestant and possibly be the winner,” Jo Schmeiser said.”

see page 8

IF YOU REMEMBER MAKING ONE OF THESE,

IT'S TIME TO MAKE ONE OF THESE: **Today**

LET'S MAKE COLORECTAL CANCER HISTORY **Colonoscopy**

Help us make colorectal cancer history by scheduling your colonoscopy today or by encouraging your 45+ friends and family to do so.

GET A TOTALLY AWESOME 'BOS T-SHIRT TO SUPPORT THE CAUSE

▶ LEARN MORE

Bayhealth™  
CANCER INSTITUTE

from page 7

Schmeiser and others are also looking forward to the concerts that are held at the fair each year. This year, Nelly, Jackson Dean, Riley Green, Zach Williams, Lainey Wilson and Tyler Hubbard will be performing at the fair. Gabriel “Fluffy” Iglesias will perform his comedy while the “I Love the 90s” concert will feature Vanilla Ice, Rob Base, Color Me Badd, Tone Loc and Young MC.

“I miss the stock car races there,” Jeremy Dutton said. “That was always my favorite race of the year to see.” This year, there is a Demolition Derby and harness racing planned as part of the fair.

Naturally, one of the biggest attractions at the fair are the rides, provided by The Wade Shows. The Giant Wheel, a large ferris wheel, is a popular attraction as is Alpine Bob’s, the Orbiter and the Pirate. For the smaller visitors, rides like Jalopy Junction, the Helicopters and the Berry Go Round are big attractions.

Admission is much easier at this year’s fair with the addition of the Fair Pass Card, a digital ticketing app. This allows visitors to purchase tickets through the FunTagg app and avoid waiting in line at the gate. This year, there is also an Unlimited Ride Wristband that is available through advance purchase until Wednesday, July 19, at \$25. After July 19, the cost of the wristband is \$40. To purchase wristbands in advance, visit the Delaware State Fair [website](#).

Special admission days include Pepsi Day on July 21 when visitors can present a specially marked coupon to get \$2 off one adult gate admission. Food Lion Hunger Relief and Senior Day are planned for July 24. Anyone

who brings five non-perishable Food Lion brand items as well as those over 60 receive free admission. Kid’s Day is planned for July 25 where all children 12 and under get in free. July 26 is Armed Forces Day offering free admission to active duty and retired military personnel who present valid military ID. Highmark Blue Cross Blue Shield Governors Day/Seniors Day is planned for July 27 with anyone 60 and older receiving free admission.

The fair has come a long way from its humble beginnings in 1919. The idea to create a fair in downstate Delaware started with a group of Harrington residents who were gathered in the Harrington railroad station around a potbelly stove. As the idea grew, many community-focused residents began attending meetings in an effort to create a fair in southern Delaware, quickly outgrowing the railroad station as the location for the meetings. Meetings were then moved to the Harrington Fire Company hall.

The desire was to have a fair or exposition that would promote and encourage agriculture as well as giving residents of rural communities in Delaware a place for entertainment and a diversion from everyday life. On Feb. 17, 1920, the group purchased 30 acres for \$6,000, laying out the track and the Grandstand. Initially, the fair was known as the Kent and Sussex County Fair as the Delaware State Fair was a name used for a fair in Elsmere. The first Kent and Sussex County Fair opened on July 27, 1920. At the time, admission to the fair was 25 cents for children and 50 cents for adults.

[CLICK TO READ MORE](#)



**FEEL BETTER SOONER.**

WITH BAYHEALTH VIRTUAL URGENT CARE, YOU CAN SEE A BOARD-CERTIFIED DOCTOR IN AS FEW AS 10 MINUTES, 24/7.

Allergies, rashes, infections, sore throat, cold and flu, gout, UTIs. Whatever the symptoms, get the care you need sooner. Download the app and enroll today. [Bayhealth.org/Virtual-Urgent-Care](https://www.bayhealth.org/Virtual-Urgent-Care)

BAYHEALTH@HOME  





by Martha Pileggi

# “FAMILIAR PLACES” EXHIBIT AT LIBRARY

## STAFF REPORT

“Familiar Places” opens at the Milford Public Library, at the Mispillion River Walk, 11 SE Front Street, Milford on Saturday, Aug. 5, and will hang until Sept. 9. The opening of the show will be marked by Martha Pileggi creating a plein air painting of the local Farmers Market on site from the windows of the first floor library from 9:30 a.m. to approximately noon. You can win the actual painting which will be raffled off for the benefit of the library. You can meet the artist while she is painting and see how the artwork is progressing or ask any questions about her equipment and painting process or plein air painting in general.

Ms. Pileggi’s style is a mix of realism and impressionism. She uses a full range of value and color in her paintings, some colorful and some subdued. Her busy landscapes are quiet places and are meant to create a relaxed atmosphere.

Previously known for watercolors, painted tiles, etchings and beaded jewelry since the 1980s, Pileggi now paints almost exclusively plein air from three to five days a week, with various Plein Air groups and on her own throughout Delaware, Maryland, Pennsylvania and Virginia. She participates in many local Plein Air painting events. She scopes out her areas beforehand using Google maps as much as possible, so she can find boat landings near the water and local streams with nearby access. With her “MartArt Mobile” studio van

she can pick up and paint at a moment’s notice with all her painting gear already packed and ready for any kind of weather.

“Plein air painting is not for everyone.” she states, “It’s not like painting in a studio. You have to be prepared to have encounters with turkeys surrounding you, ground-hogs coming up to a painting setup, macaws trying to steal your brushes, ponies and foxes walking within inches of your easel, even hummingbirds hovering over your shoulder watching you paint. There is also the constant battle with the wind, mosquitoes, snakes and biting ants and flies, along with sudden pop-up showers and lightning. You just never know what to expect when you plein air paint.”

Pileggi is currently represented by Tish Gallery in Chestertown, MD, and also shows at the various Plein Air events in Berlin, Chestertown, Chincoteague, Laurel, and throughout Delaware and Maryland.

All of the paintings are for sale with a portion being donated to the Milford Public Library. Pileggi can be reached by email to purchase her art at [mvpfinearts@gmail.com](mailto:mvpfinearts@gmail.com) or by phone at 302-422-0192. You can find the current Milford Library hours on their website <https://milford.lib.de.us>.

MILFORD  
LIVE

# BUSINESS

Farm to Table ...  
• Asparagus • H...  
• Apples • Far...  
**STAG R**  
2365 Foxcroft Lane • Co...  
(cell) 302.270.7384 •  
www.de...



photo link: [Downtown Milford Inc.](#)

## DOLCE REOPENS AFTER RENOVATIONS

BY TERRY ROGERS

The downtown Dolce location closed on July 1 so that the new owner, Mark Dissinger, could give the interior a facelift. The new 10th Street location remained open as the interior walls were given a new coat of paint and cases were given a facelift at the Walnut Street store.

“The response so far has been overall very good,” Chris Tenbusch, general manager, said. “Everyone loves it. The changes brighten it up a lot. A facelift is always good in any business and so far we have had outstanding response to the changes.”

The new interior includes a brighter, more open look, with the counter and trash can in the center removed. The new, custom built counter features a metal front with a rich wooden top. Bakery cases have been moved in an effort to create a more open space as well. Above the front door is a stained glass “36,” for the address of the downtown location that makes it stand out. Smaller,

more modern looking furniture now sits in the window as well and there are more tables lining the wall for customers.

“We took down some of the decorations that had been there since George and Chuck owned it years ago,” Dissinger said when the 10th Street coffee shop opened. “The trashcan piece was nice, but we feel removing it will open up the area more. We just felt it was time to freshen it up, bring it into today’s world.”

Both the Walnut Street and 10th Street locations are open Monday through Wednesday from 7 a.m. until 3 p.m., Thursday from 6 a.m. until 5:30 p.m., Friday from 7 a.m. until 3 p.m. and Saturday from 8 a.m. until noon. Both locations are closed on Sundays.

MILFORD  
LIVE

## Providing Big Support For Delaware’s Small Businesses



**Delaware**  
DIVISION OF SMALL BUSINESS

[business.delaware.gov](https://business.delaware.gov)

# JOHN MOLLURA

- PHOTOGRAPHY -

BEAUTY PORTRAITS - HEAD SHOTS  
- FAMILIES -

302.222.6308



# GOVERNMENT & POLITICS



photo link: City of Milford

# WALNUT STREET DECKING PROJECT DELAYED

BY TERRY ROGERS

Public Works Director Mike Svaby provided council with an update on the Walnut Street bridge decking project to City Council. He also requested approval of a purchase order in the amount of \$48,910.07 that would be used to finalize document preparation, advertisement for bids as well as construction oversight.

“The redecking of the Walnut Street Bridge is an effort toward making an ADA/pedestrian access and travel across the bridge safer while at the same time building an aesthetically pleasing and durable finished surface that is commensurate with the look and feel of downtown Milford,” Svaby said. “We found some conflicts and projects that are going on in downtown Milford which is actually a fortunate struggle. We’ve got a lot of things going on. Some are DelDOT related and some are our own.”

Greenman Pederson Inc. completed the design of the bridge redecking under a shared use contract with

DelDOT. The project was approved and funded in the FY 2023 CIP and some of the costs will be from bond bill funds approved by the state, Svaby explained.

Council was provided a preliminary design for the bridge decking which will not only provide a safer crossing option for pedestrians and add better ADA accessibility downtown, it will create a speed deterrent as the decking will be raised slightly. The center of the decking will have design elements that indicate that the river is the dividing point between Kent and Sussex counties.

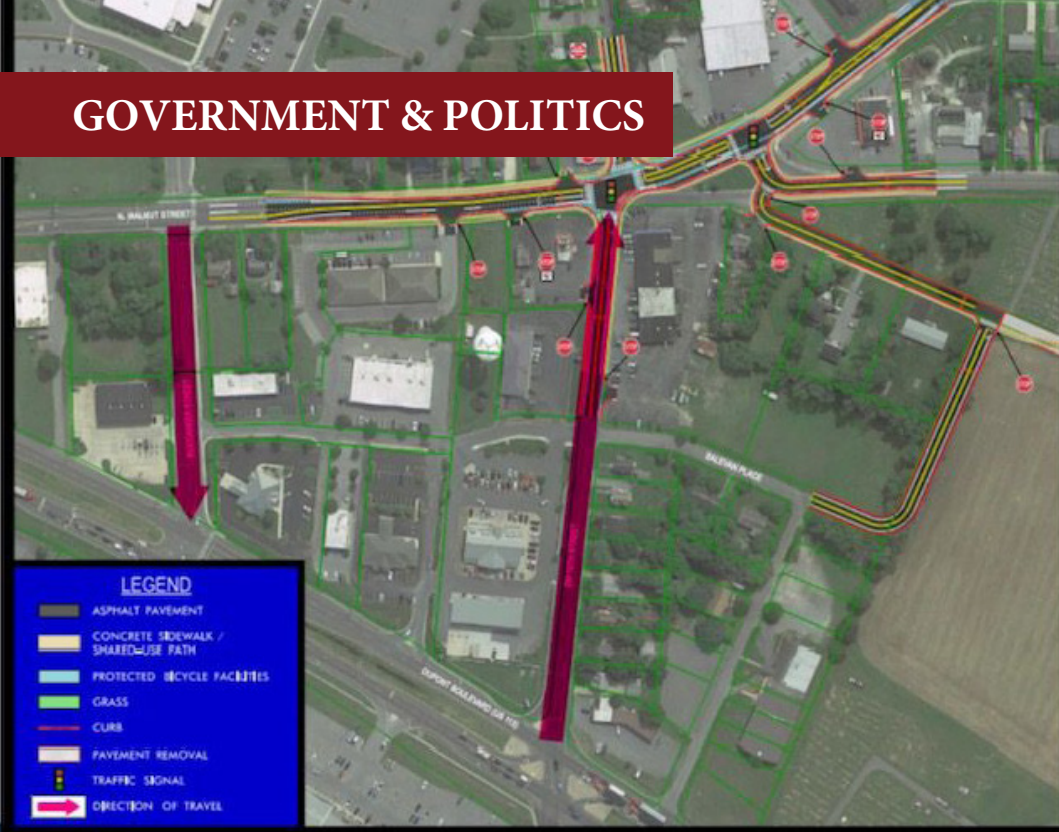
Council approved the purchase order unanimously and Svaby explained that he hoped to have the project underway in early 2024.



Download Delaware Electric Cooperative's Beat the Peak app!



Receive real-time alerts to conserve electricity to help keep member rates affordable!



BY TERRY ROGERS

At a recent meeting, Milford City Council heard suggestions from Century Engineering to improve traffic flows and pedestrian safety in the area of the 10th Street and Rehoboth Boulevard intersection. Some of the suggestions included adding protected pedestrian and bicycle lanes, adding signals and converting two roads from two-way traffic to one-way.

“Primarily that area where the new Meineke is, the Dairy Queen and a couple of the other stores there,” Rob Pierce, city planner, said. “So primarily looking at that area trying to provide better connectivity from the residential areas up to the high school and middle school. So, the Dover Kent Metropolitan Planning Organization (MPO) hired Century Engineering to perform this study, and they’ve been working with the city in the MPO over the last, I would say 10 or 11 months to finalize this study.”

# COUNCIL REVIEWS POTENTIAL 10TH STREET INTERSECTION CHANGES

Sonia Marichic, associate vice president for Century Engineering, provided an overview of the various changes that could occur over the next 10 to 20 years with some options not proposed to go into effect until 2050.

“So, when we started this project, one of the main goals was to provide pedestrian and bicycle connectivity between the residential areas and the high school what we quickly found out was that there’s also an operational challenge or issue at this intersection where we were seeing a lot of volumes and some crash history,” Marichic said. “And so, we wanted to combine all of that and see what we could solve with our alternatives analysis. This was a project that was looked at in the Milford bicycle master plan. And so, as part of our recommendations, we did look at how could we cross bicyclists and pedestrians through the intersection we knew we wanted to keep them kind of on that east side. And we also knew that we wanted to avoid impacts to the Dairy Queen.”

Representatives from Dairy Queen, the new Meineke and Patty’s Nectars attended public workshops held in December and January regarding the upgrades. Marichic explained that crash data indicated there had

see page 16

Give your Fur Baby the BEST VACATION of the Year.

FUR BABY PET RESORT IN MILFORD, DE

**SHERRY SHUPE**  
Fur Baby Pet Resort Owner, Dog lover

**FUR BABY**  
PET RESORT

from page 15

been 43 crashes between 2017 and 2022 and that the peak time for crashes was at school dismissal, between 2 and 3 in the afternoon. Marichic also explained that they reviewed existing levels of service and found that delays at the lights in the area were already considered failure based on DelDOT requirements. She pointed out that there were some awkward turning requirements at the intersection near Dairy Queen.

“Cars are coming up, they almost have to do a U-turn and then almost another U-turn to get out to Rehoboth,” Marichic said. “What we heard at the workshops is ‘Yeah, I don’t do that. I just go through the parking lot.’ So, I’m sure the owner of that property loves that. So, we wanted to look at how we could improve that as well. And then at the intersection itself, all the congestion and really the lack of pedestrian and bicycle infrastructure which is very important since you know this is adjacent to a school.”

Initially, Marichic stated they attempted to square up the intersection and make it more traditional with turn lanes, but quickly found that was not going to meet the needs of both pedestrians and drivers. They also looked at a possible jug handle at Salevan Place, but that would impede truck traffic. Instead, the engineers developed a three-phase process. The first would include adding one additional signal and curving the road onto Walnut which would allow the addition of a bicycle and pedestrian lane. A section of Church Street would be closed to vehicle traffic in order to create a protected bicycle and pedestrian lane.

see page 17

# PACE Is The Place For Me! Hear what PACE Your LIFE participants are saying!



*"Since I have enrolled, I have become more lively and social. I like everything about PACE, especially the people and the food!" ~ Theresa Shaffer*

*"Before enrolling in PACE Your LIFE I was depressed. Now I love to mingle with the participants and help them enjoy themselves." ~ Ed Darling*

*"My days before PACE Your LIFE were terrible. I was home alone all day. Now I tell people there is nothing else like PACE." ~ Ronnie Armstrong*



**PACE Your LIFE is a comprehensive medical and social program for residents in Milford as well as surrounding towns, who are 55 and older and need assistance with activities of daily living but want to age in place and remain in their home. Learn more today by scanning the QR Code!**



Your Life, Your Home,  
Your Way



A Program of All-Inclusive Care  
for the Elderly



“We would make a new connection from Church out to Salevan. So there were two houses that remain. They would be able to have their choice. They could go out to Walnut or they could go back through Salevan Place,” Marichic said. “And then the biggest change to Rehoboth Boulevard. So, for the most part, that stays how you’re anticipating it to kind of operate almost today except that the bicycle and pedestrian facilities are really separated from the roadway traffic and the lefts from Rehoboth Boulevard onto Northwest 10th Street are restricted. So traffic would then go up to Buccaneer and make the left. So, if you’re traveling on Rehoboth Boulevard you would make to kind of circulate and make that left turn you would actually go up to Buccaneer and make the left.”

Councilman Andy Fulton pointed out that a crosswalk in front of Dairy Queen had been removed, asking that it be added back in for the safety of high school students who frequent the business between school and sporting activities. Marichic stated that would be possible.

“I could jump in. I think the concern was trying to get something that could be done in the short term to help get people from residential areas over to the high school,” Pierce said. “I think once you start actually diving into the 10th Street intersection it gets a lot more expensive and may take a lot more resources and time to accomplish that project that we wanted to kind of see if we could phase this in to make it more manageable. But if we’re able to do the whole thing at once, we’ll probably attempt to do it but it really comes down to funding and the ability to work with the state on getting it implemented.”

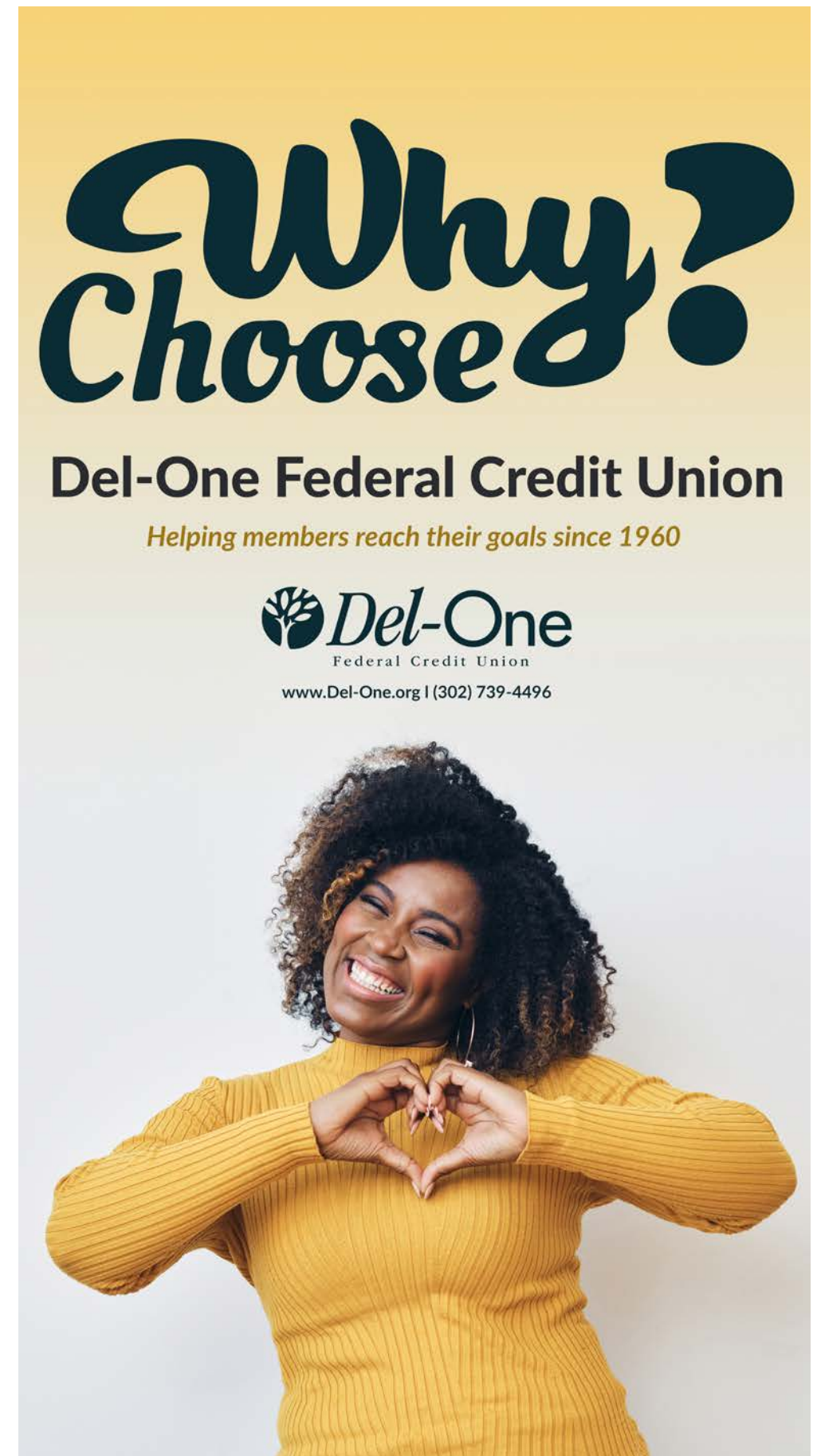
One of the biggest changes to traffic in the area would likely not occur until as early as 2037 or as late as 2050 and that was changing Buccaneer Boulevard and Northwest 10th Street into paired one-way traffic. The change would have Northwest 10th Street converted to a one-way traveling east while Buccaneer Boulevard would be converted to one-way going west. James Puddicombe, city engineer, pointed out that the city had applied for grant funding for the upgrades and if they received the grant, it could accelerate the timeline for the changes.

“So with Wawa, we did get a lot of discussion about Wawa,” Marichic said. “And what we heard from the community was that it’s very difficult to get into or out when there’s all the congestion. And so, this will help the circulation and make it easier to get in and out of the Wawa.”

Councilman Brian Baer stated that the changes would not make it easier to get in and out of Wawa if you were coming from the Third Ward, explaining that it was already difficult for residents in that ward to even get to the Public Works office in the industrial complex off of Airport Road due to congestion. He felt the changes would make the traffic pattern even worse.

“I concur with Councilman Baer on this. I don’t know. I would just like to get some more on making 10th Street one way,” Councilman Jason James said. “It sounds simple. But you live here, and you see the movement that’s going to be prohibitive to people and I don’t know how it’s gonna affect the gentleman who just redid the carwash there and getting into Wawa.”


[CLICK TO READ MORE](#)



**Why?  
Choose?**

**Del-One Federal Credit Union**

*Helping members reach their goals since 1960*

  
Federal Credit Union  
www.Del-One.org | (302) 739-4496

# TRASH ISSUES DISCUSSED AT COUNCIL MEETING

BY TERRY ROGERS

At a recent meeting, Public Works Director Mike Svaby was questioned by council about continued complaints from constituents about trash and recycling issues throughout Milford. According to Councilman Todd Culotta, he has gotten multiple complaints about missed trash pickups.

“The trash pickup this week has been substandard. We have a bunch of cans still out on South Walnut Street for recycling that have not been picked up. Multiple residents have contacted me saying they’ve called customer service to find out why their trash or recycling wasn’t picked up. No call back. No acknowledgement, they just get a recording,” Councilman Culotta said. “Mark, you texted me last week saying we had some trouble with some trucks. So why do we continue to have this and then why do we not communicate with the tools that we have with the public that there are issues in the shop, and we are doing our best to get stuff cleaned up? It is very frustrating.”

Svaby explained that he understood the frustration, stating that, at one point the city was down two trucks. He apologized for not communicating this to the public, and promised they would do a better job in the future. Councilman Culotta asked how many trucks there were to which Svaby stated there were four, but two of them were down. Councilman Culotta asked why this kept happening and why there were not enough spare parts in stock to deal with breakdowns.

“A lot of the repair work that we do, we complete in house, we have spare parts for the stuff we do in house, the minor maintenance but the larger things that go wrong include things with the arm, hydraulic problems,” Svaby said. “They’re things that we typically don’t have the ability to repair that we send out for and as a norm, their return is within three or four days. Another thing that sort of goes into shuffling the deck for us every day, literally is we have three out of four positions

see page 19



**GBC** 1886 **Goldey-Beacom COLLEGE**

## NEW GRADUATE CERTIFICATE PROGRAMS

- Certificate in Marketing
- Certificate in Human Resource Management
- Certificate in Health Care Management
- Certificate in Entrepreneurship
- Certificate in Information Technology

**LOCATION** | **CONTACT** | **WEBSITE**

4701 Limestone Road  
Wilmington, DE 19808

302-225-6248  
Admissions@gbc.edu

www.gbc.edu/

from page 18

filled. We have an advertisement out now and Jamesha's just helping us try to fill that. So, we have some folks to look at on that front."

Svaby then explained that there was a positive note and that the city was close to signing up for a subscription for route management software which would show them every location that is registered as a customer as well as if they were picked up.

"So, at a certain point, about two-thirds of the way through the day, we will identify what, if anything, has been missed," Svaby said. "And if something has been missed, whether or not it's been missed because our team is not out or a legitimate reason why the customer wasn't served. That is one thing, but missed pickup is not acceptable at any level. It was never our standard to do that. Our goal is to pick up every eligible customer's containers on time that day they're supposed to be, never carry over to the next day and we have high hopes for this route management software."

Councilman Culotta explained that he hated to bring it up at a public meeting and give Svaby a hard time, but he gets many calls from constituents who are concerned which makes his job harder.

"It's a difficult service, but it's a much needed one. And, we're in charge of housekeeping for the city. And that's something we need to get on top of and we have high hopes for this route management software," Svaby said. "We had a demo of it, and we've looked at several others the one we're zeroing in on will help us identify before the day is over what's been missed, so we're gonna get on top of it that way."

[CLICK TO READ MORE](#)

**db** DELAWARE BREAST CANCER COALITION  
Invites you to celebrate  
*The 2023 Shining Light Awards*  
Honoring L&W INSURANCE  
Wednesday, August 3, 2022  
5:30 p.m. - 7:30 p.m.  
The Waterfall Cocktail Reception [Learn More](#)

DELAWARE LIVE  
OUR STATE. OUR NEWS. OUR HOME.  
“  
**Our ads change at the pace of our business needs**  
- SOUTHERN STATES

DELAWARE LIVE  
OUR STATE. OUR NEWS. OUR HOME.  
“  
**With Delaware LIVE we share our story, not remain a static ad**  
- BOYS & GIRLS CLUB OF DELAWARE

**Mountaire**  
Fresh Young Chicken  
**Supporting generations of Delmarva farmers**  
mountaire.com

# EDUCATION



photo link: [Milford School District](#)

MILFORDLIVE



MilfordLive



@Milfordlive

MilfordLive.com



# MILFORD SCHOOL DISTRICT TO HOLD DEDICATION CEREMONY

regardless of their background or abilities. His commitment to his students was evident in the way he helped build their confidence, created meaningful memories and taught them how to positively express themselves through their performances in both music and art.”

The dedication will be a celebration of Dr. Thompson’s life and highlight the profound impact he had on the Milford Community. Students, alumni, faculty, staff and community members are all invited to attend this special occasion. The program will include speeches, musical performances and a commemorative unveiling of the center’s name.

When the Milford School Board discussed the possibility of renaming the auditorium after Thompson soon after he passed away, the outpouring of support from the community was tremendous. The effort began at the behest of Paula Bragg, who rallied the community around changing the name, submitting a petition to the board with more than 1,000 signatures.

“He made a difference and he was just the coolest. He found a way to give us independence. He believed in us and supported our creative sides. Thanks to Mr. Thompson, I have a closer relationship with my parents. He

see page 22

BY TERRY ROGERS

Milford School District will hold a dedication ceremony on July 29 from 10 a.m. until noon in order to rename the high school auditorium the Dr. Gerald W. Thompson Center for the Performing Arts. The dedication ceremony will take place outside of the auditorium, is open to the public and a performance will follow.

“The Dr. Gerald W. Thompson Center for the Performing Arts is dedicated to the memory and honor of Dr. Gerald W. Thompson, who served as the esteemed band director and music teacher at Milford High School from 1972 to 1999,” Trish Gerken, public information officer, said. “Dr. Thompson’s dedication to sharing his love of music and the arts with the Milford community for nearly three decades was exceptional. He had a remarkable ability to connect with and inspire each individual,



**Do your dollars make sense?**

---

All DE schools are funded through a strict formula no matter the needs of the students.

The "one-size-fits- all" approach has not worked, right?

If we want DE to get smart like our neighbors...

Join the conversation.  
**Click to subscribe to our newsletter.**

FIRST STATE EDUCATE 

EXPECT EXCELLENCE • ACT TOGETHER

from page 21

gave us great sayings like ‘failure to plan on your part does not constitute an emergency on mine.’ Let us not forget the glide step that saved me in Manhattan just a few days ago. And thanks to T, I even found my first love,” Bragg told the school board when they were making the decision. “When he passed I couldn’t find the right words, but I knew how deeply his loss is felt by so many and that we needed to do more. I had great conversation with lots of friends and the obvious choice seemed to dedicate the auditorium, a place where he spent so much time and all of us who have been theater did as well.”

The request to name the auditorium after Thompson had full support of his family.

“Tonight, I’d like to speak on behalf of my father. Because I think, at this time, he would want all of you to know how much he enjoyed his job, band members and boosters, members of the drama department and the rock ensemble and other music students,” Gretchen Pikus, Thompson’s daughter, told the board. “He always told me to get job that you enjoy, so I did that. So, I would just like to end with his favorite song that he brought from Westchester to Milford High School, and it goes ‘with all your strength, hey win, we can. So here we go again. Rah rah rah Milford Buccaneers.’”



**SOUTHERN STATES**  
Farmer owned since 1923.

**Mon-Fri 7am-5pm**  
**Sat 7am-Noon**



**302-422-8066**  
**info@milfordsouthernstates.com**

# SHOP RHINO GUN SAFES

Extreme Security & Fire Protection For Your Valuables



**AVAILABLE AT**

**SOUTHERN STATES**  
MILFORD CO-OP, INC

# HEALTH



photo link: Bayhealth Medical Center



## STAFF REPORT

Bayhealth, a leading healthcare provider in central and southern Delaware, held a ribbon cutting ceremony to mark the grand opening of Bayhealth Total Care, a groundbreaking new facility that aims to revolutionize healthcare delivery in Sussex County.

Bayhealth's Emergency and Urgent Care Center, Total Care-Milton, is the first of its kind hybrid-emergency and urgent care open 24/7 in Delaware. This innovative approach eliminates the confusion for patients who are unsure whether their condition requires emergency or urgent care. The facility also houses walk-in lab services as well as imaging, primary care and specialty care physician offices.

"Bayhealth Total Care represents a significant milestone in our ongoing effort to improve access to quality healthcare in Delaware," said Bayhealth President and CEO Terry Murphy, FACHE. "We're committed to making your healthcare experience faster and easier, without asking you to choose between quality and convenience. That's why we've created Bayhealth Total

# BAYHEALTH HOLDS RIBBON CUTTING FOR MILTON TOTAL CARE FACILITY

Care, home to many physician practices necessary to manage your family's health under one roof."

Sussex County Council President Mike Vincent was also in attendance, and noted the work Bayhealth has done to provide high quality healthcare in an area that has seen continuous growth.

"All of us want to have excellent and convenient care close to home," Vincent said. "With Bayhealth Total Care, our local communities now have access to emergency and urgent care services—on this side of Route 1—to get timely care when they need it most."

One of the key challenges that Bayhealth aims to address through this new facility is the physician shortage affecting the nation. By expanding access to care across the First State, Bayhealth is working towards bridging the gap between patient demand and available healthcare providers. In addition, Bayhealth's Graduate Medical Education programs are currently training 73 resident physicians, further contributing to the future of all healthcare in Delaware.

"We've been recruiting the best talent in medicine from across the country and bringing them to Delaware," said Senior Vice President, Chief Medical Officer and GME Designated Institutional Gary Siegelman, MD. "Having physician residency programs not only strengthens the caliber of our health system, but it furthers the ways we're able to serve our community in

our hospitals and practices—in fact, it equates to more than 15,000 patients annually receiving the care they need when they need it."

The opening of Bayhealth Total Care is a testament to Bayhealth's dedication to innovation and patient-centered care. The facility is equipped with state-of-the-art technology partially funded by generous donors and staffed by a team of highly skilled healthcare professionals, ensuring the patients receive the highest quality of care in a comfortable and convenient setting.

Bayhealth Total Care is located at 18383 Hudson Road in Milton. The facility opened its hybrid emergency and urgent care, and specialty care clinicians will be accepting new patients. To learn more, visit [www.bayhealthtotalcare.org](http://www.bayhealthtotalcare.org) or call 302-725-3500.





# SPORTS



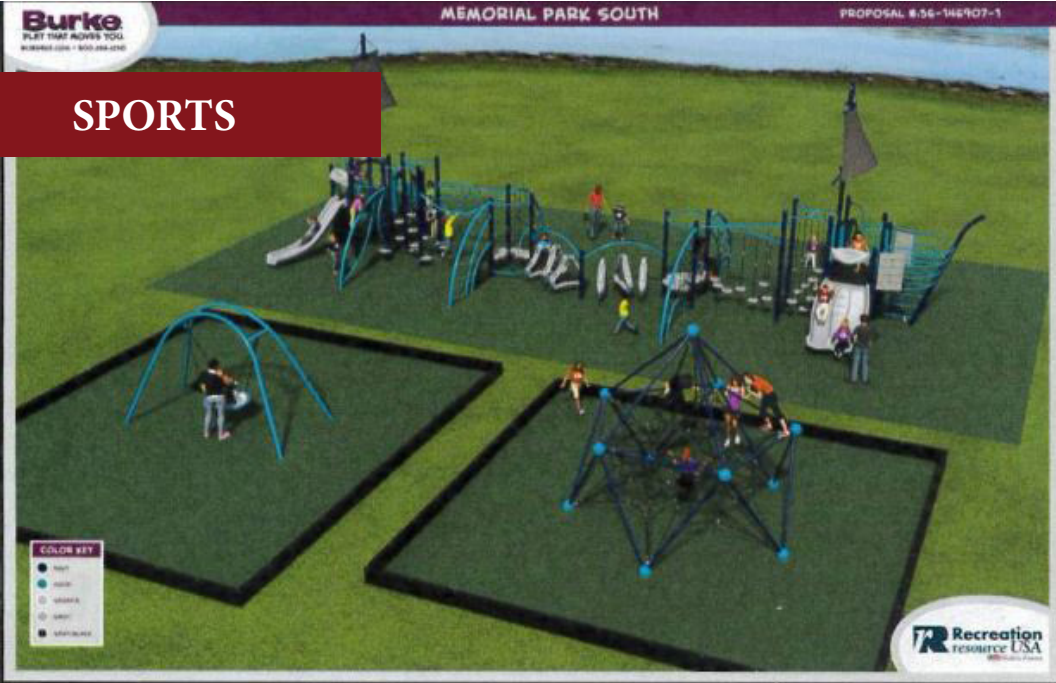
photo by Joan Azeka on Unsplash

MILFORDLIVE

 MilfordLive

 @Milfordlive

MilfordLive.com



BY TERRY ROGERS

Parks and Recreation Director Brad Dennehy told Milford City Council at a recent meeting that the new pickleball courts located in Memorial Park should be open in the next few weeks. The department is currently sealcoating the surface before striping them.

“We just put new pervious parking spots in and we continue to move forward with our playground. They’re in the process at the moment of bringing in all additional stone in order for the rubber surfacing to go down on top of that, and just one other highlight Councilman [Brian] Baer you’ll be pleased to know, a bit of our new fence and pedestrian gate installed on Fisher Avenue so I know you had several calls from constituents of wanting a pedestrian gate so that just got finished up today.”

Dennehy explained that the pickleball nets were in stock and as soon as the striping was completed, they would be installed. He expected the courts to be open to the public in the next three to four weeks.

## PICKLEBALL COURTS NEARING COMPLETION

“I think the playground is going to take a little bit longer with that with the supply chain with the rubber surfacing, but we are hoping to get the pickleball courts open up as soon as possible,” Dennehy said.

Councilman Brian Baer asked about the progress on the public restroom.

“This week we intend to place the order for the restroom. The final preparation we had to do was get the site contractor on board and we finally did that. So, the restrooms are about a six-month lead time,” Mike Svaby, director of Public Works, said. “So, we’ll place the order this week. And we’ll time the site contractor up just right. Once the restroom is dropped in place, the concrete will go around, and we’re looking at about seven months or so from today, tentatively, to get everything in place.”

MILFORD  
LIVE

# Keep the fun in summer.

**KEEP COVID-19 IN CHECK.**



GET  
VACCINATED  
OR BOOSTED.



STAY HOME  
IF SICK AND  
GET TESTED.



TESTED  
POSITIVE?  
GET  
TREATMENT.



CONSIDER  
MASKING UP.



Learn more at  
[de.gov/coronavirus](https://de.gov/coronavirus)



# POLICE & FIRE



[CLICK TO READ MORE](#)



[POLICE & FIRE](#)

photo link: Vincent J. Deskiewicz Sr.

# MPD PROMOTES TWO OFFICERS

## STAFF REPORT

Milford Police Department recently announced that they had promoted two of its officers. Rhett Malone was recently promoted to Senior Corporal and Garrett Smith to Patrolman First Class.

Sr. Cpl. Malone is currently assigned to the Patrol

Division and Special Operations Group. He is also MPD's head firearms instructor.

Pfc. Smith is currently assigned to the Patrol Division as well as the Special Operations Group.



# STAY CONNECTED

**MILFORD LIVE IS YOUR SOURCE FOR NEWS AND INFORMATION IN THE GREATER MILFORD, DELAWARE AREA. STAY CONNECTED WITH US BY PHONE, EMAIL OR ON SOCIAL MEDIA BY CLICKING ON THE LINKS.**



**PHONE: 302-542-9231**



**For News & Information: [news@delawarelive.com](mailto:news@delawarelive.com)  
To Advertise With Us: [shupe@delawarelive.com](mailto:shupe@delawarelive.com)**



**[instagram.com/milford\\_live/](https://www.instagram.com/milford_live/)**



**[twitter.com/live\\_delaware](https://twitter.com/live_delaware)**



**[facebook.com/delawarelivenews/](https://www.facebook.com/delawarelivenews/)**





**Watch Delaware Live on YouTube!**



**[linkedin.com/company/delaware-live-news](https://www.linkedin.com/company/delaware-live-news)**

# MILFORD LIVE

 **MilfordLive**  **@Milfordlive**

**Without these collaborators,  
this outlet would not be  
possible:**

**Bryan Shupe, CEO**

**Betsy Price, Editor**

**Sonja M. Frey, Publisher**

*John Mollura Photography*

## *Design your 2023 through Intentional Business and Marketing Planning*

As a locally-owned company, Delaware LIVE News takes pride in working alongside regional businesses to develop digital marketing campaigns, through our daily news platforms.

From large corporations like Christiana Care, Delaware Tech Community College, and Delaware Department of Health to small shops like Fur Baby Pet Resort, Dolce Coffee Shop, and Benvenuto Tuscan Restaurant, we customize each plan to optimize the needs of each of our marketing partners.

I would love the opportunity to meet with you for 10-15 minutes to see how we can help. You can click the link to set up a meeting with me in our virtual office: <https://meetings.hubspot.com/shupe1>

*CEO, Bryan Shupe / 302-542-9231 / shupe@delawarelive.com*

